

ONWOTE



OW5

Wire Free Camera

Content

01

What's in the Box

02

Camera Introduction

03

Set up the Camera on Phone

06

Set up the Local Storage

06

Charge the Camera

08

Install the Camera

09

FAQ

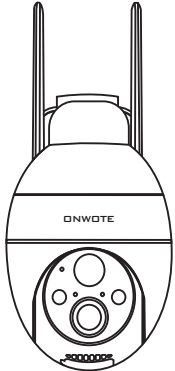
11

Safety Instructions of Battery Usage

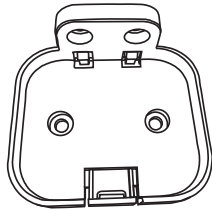
12

Notification of Compliance

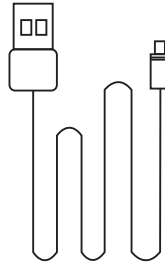
What's in the Box



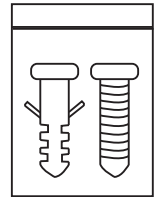
Camera



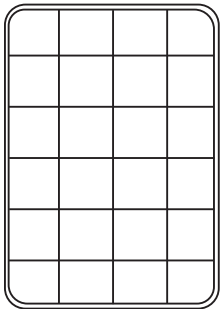
Mount Base



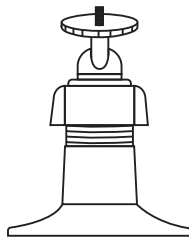
Micro USB Cable



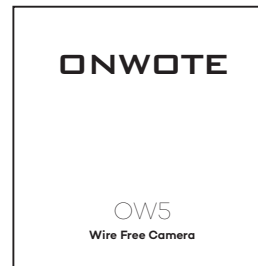
Pack of Screws



Solar Panel

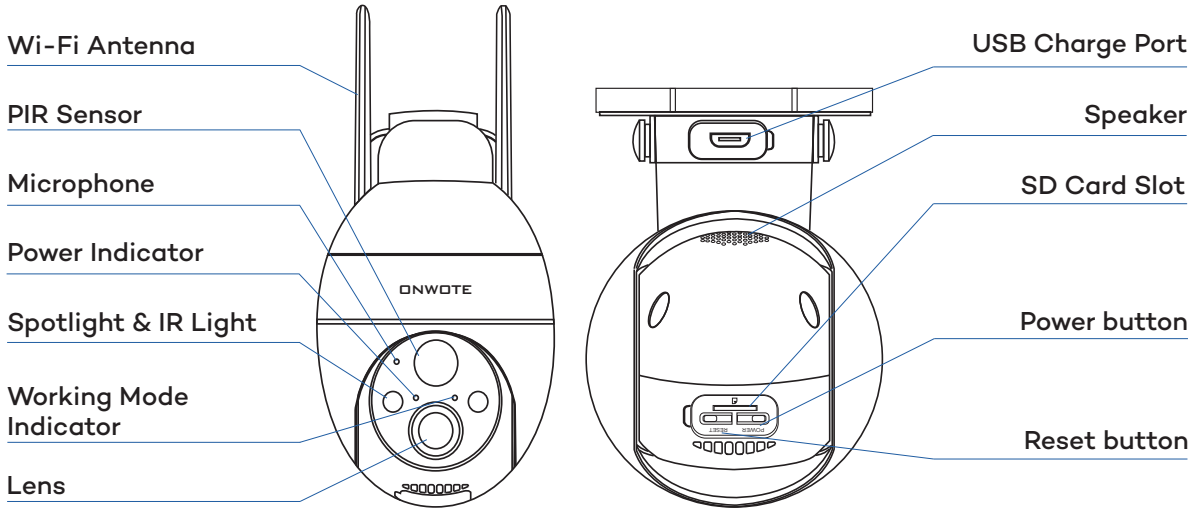


Bracket



Quick Start Guide

Camera Introduction



Power Button: Press for 5 seconds to power on/off the camera

Reset Button: Press for 5 seconds to reset the camera

Working Mode Indicator:

Blink Slowly in Red: Ready for add device

Blink Fast in Red: Wi-Fi connecting

Solid in Red: Network connect failed

Solid in Blue: Wi-Fi connected, camera is working.

Blink Slowly in Blue: Firmware update

Set up the camera on Phone

Install CloudEdge and Register Account

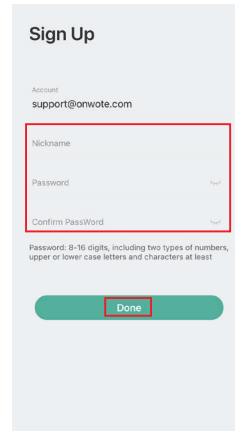
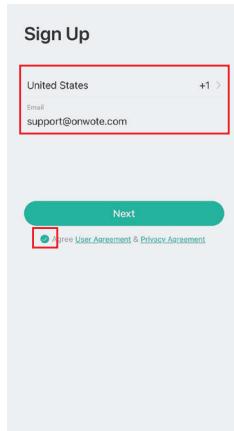
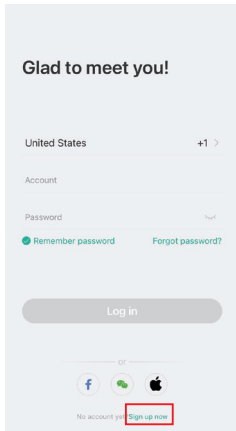
1. Download **CloudEdge** from Apple App store or Google Play.



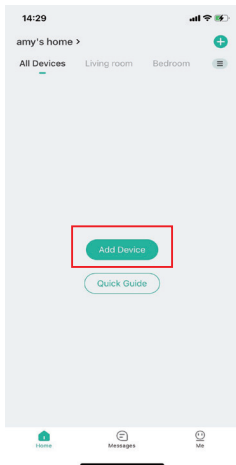
2. Launch **CloudEdge** and tap **Sign up now** at the bottom of the screen.

3. Select your country, enter your **email** address, check in User agreement & Privacy Agreement, tap **Next**.

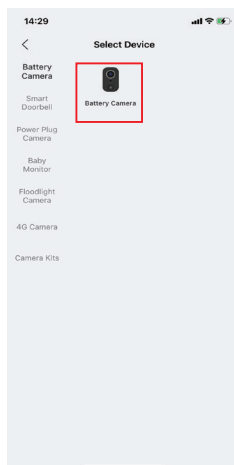
4. Enter a nickname, setup password and tap **Done**.



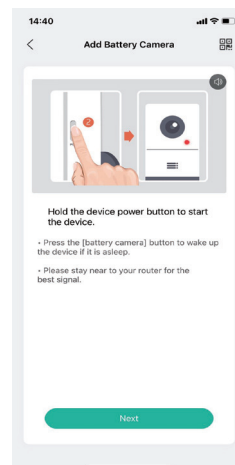
Add Camera



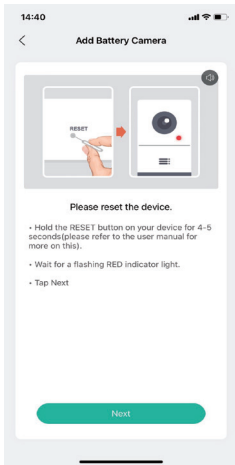
Tap on Add Device



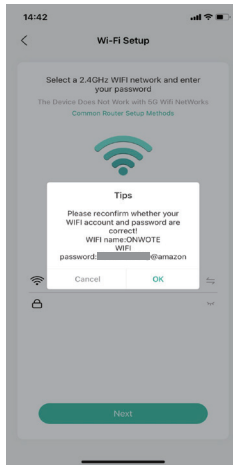
Choose Battery Camera



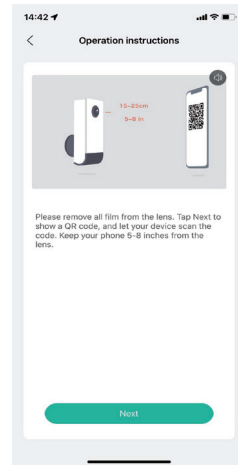
Power on Camera



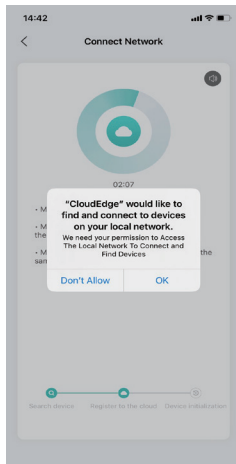
Reset Camera



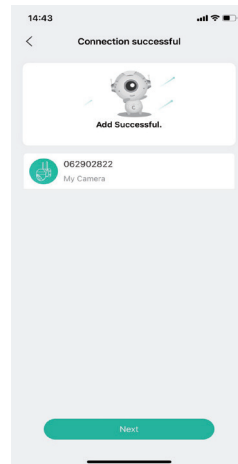
Enter Wi-Fi Password



Scan QR code

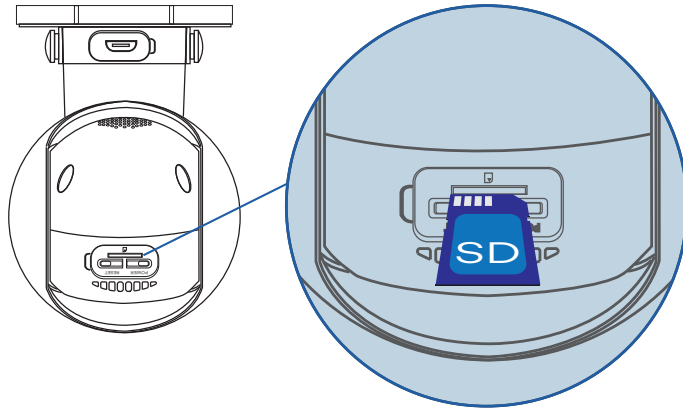


Allow App to use the local network

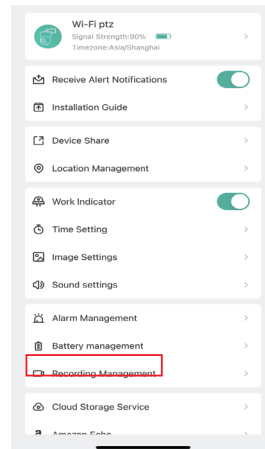
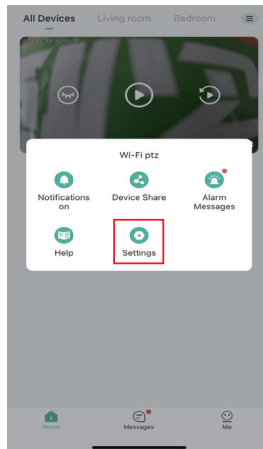
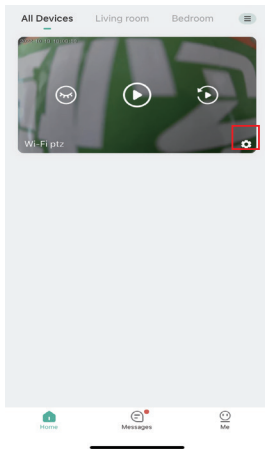


Add Device Successfully

Setup the Local Storage

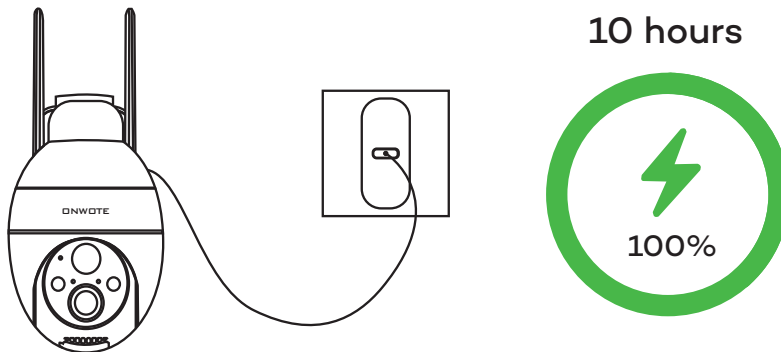


Insert SD card into SD card slot. Open CloudEdge on phone, go to camera **Setting** -**Recording Management** to format the SD card.

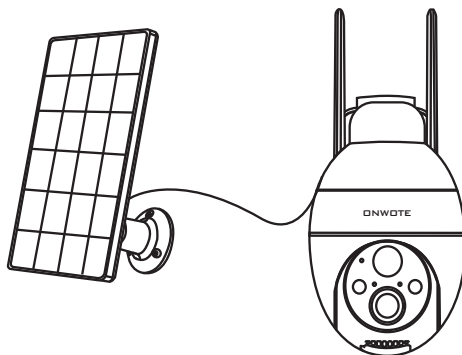


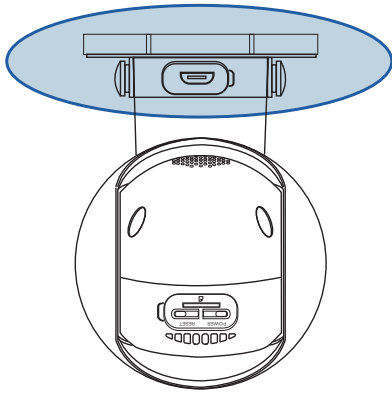
Charge the camera

We recommend to fully charge the camera before mounting the camera outdoors. Charge the camera using a 5V 2A power adapter. It takes about ten hours to fully charge the battery.



Charge the camera with ONWOTE Solar Panel (not included if you only order the camera).





For better weatherproof performance, please always cover the USB charging port with the rubber plug after charging the battery.

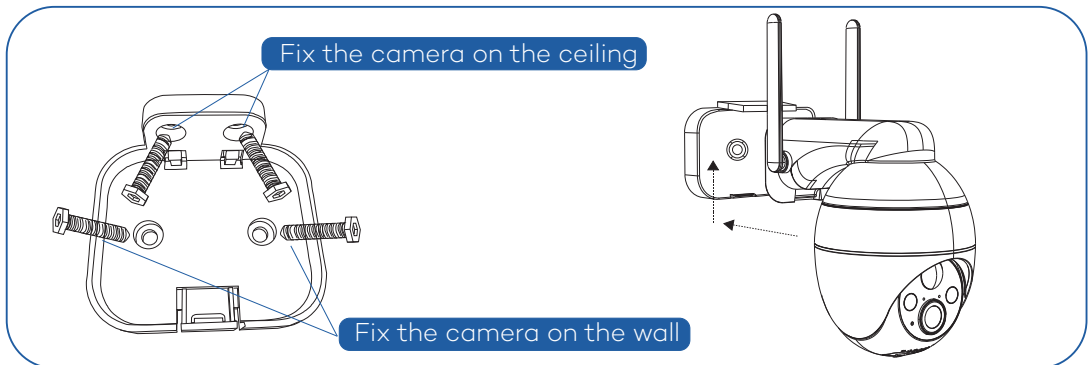
Charging Indicator:

- Red LED: charging
- Blue LED: Fully charged

Install the Camera

Install the camera 2-3 meters (7-10 ft) above the ground to get the best view.

1. Fix the mount base on the wall or ceiling.
2. Fix the camera on the mount base.



FAQ

1. Does this camera support 5G Wi-Fi?

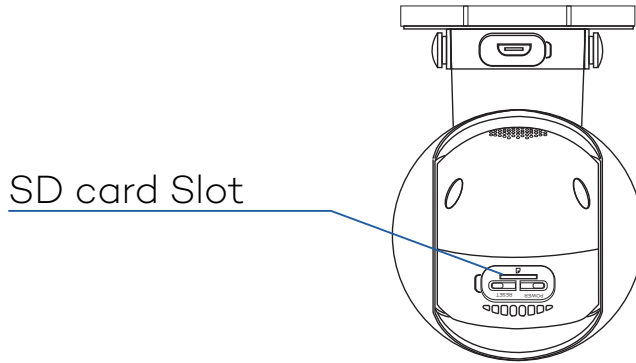
No, it can only work with 2.4G Wi-Fi.

2. What is the maximum SD card storage the camera support?

The camera supports up to 128G Micro SD card.

3. Why cannot the camera recognize my SD card?

Insert SD card before power on the camera. If you've powered on the camera, reboot your camera after you installed SD card.

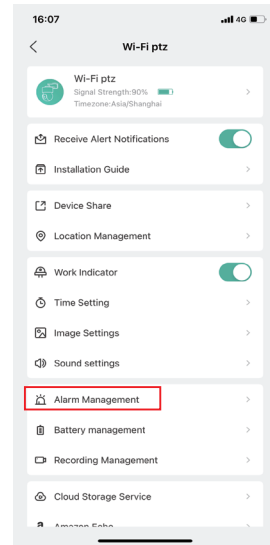
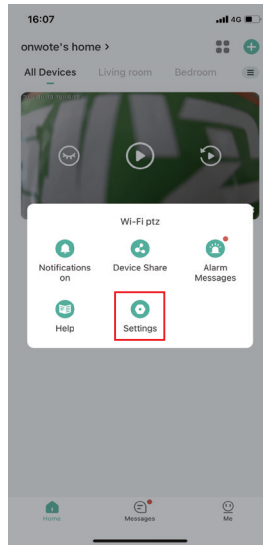
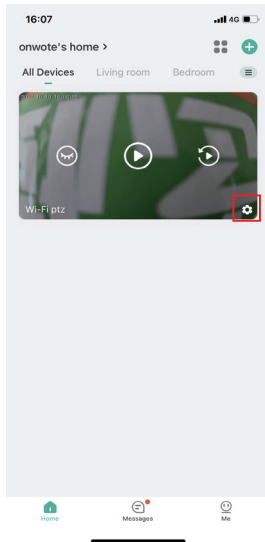


4. How to update the Wi-Fi password?

If you changed your Wi-Fi password, please delete the camera on app, reset your camera and add camera with new Wi-Fi password again.

5. How to reduce alarm notifications?

Change camera alarm settings (Setting—Alarm Management) on CloudEdge.



6. How to fix the offline issue?

- a. Check your camera power.
- b. Check Wi-Fi strength and move camera next to router to have a test.
- c. Delete camera from CloudEdge, reset camera and add it on CloudEdge again.

7. Does the camera support 7*24 hours full time record?

No, it's designed to record when detect human and to live view remotely only when you need it.

8. For more issues, please contact us at support@onwote.com or visit www.onwote.com.

Safety Instructions of Battery Usage

The camera is not designed for running 24/7 at full capacity or around-the-clock live streaming. It's designed to record motion events and to live view remotely only when you need it.

1. Do not remove battery from the camera.
2. Charge the rechargeable battery with a standard and high-quality DC 5V battery charger or ONWOTE solar panel. Do not charge the battery with solar panels from any other brands.
3. Charge the battery when temperatures are between 0°C and 45°C and always use the battery when temperatures are between -20°C and 60°C.
4. Keep the USB charging port dry, clean and free of any debris. Cover the USB charging port with the rubber plug when the battery is fully charged.
5. Do not charge, use or store the battery near any ignition sources, such as fire or heaters.
6. Do not use the battery if it gives off an odor, generates heat, becomes discolored or deformed, or appears abnormal in any ways. If the battery is being used or charged, turn off the power switch or remove the charger immediately, and stop using it.
7. Follow the local waste and recycle laws when you get rid of the used battery.

Notification of Compliance

FCC Statement

This equipment has been tested and found to comply with the limits for a Class B digital device, pursuant to part 15 of the FCC Rules. These limits are designed to provide reasonable protection against harmful interference in a residential installation. This equipment generates, uses and can radiate radio frequency energy and, if not installed and used in accordance with the instructions, may cause harmful interference to radio communications. However, there is no guarantee that interference will not occur in a particular installation. If this equipment does cause harmful interference to radio or television reception, which can be determined by turning the equipment off and on, the user is encouraged to try to correct the interference by one or more of the following measures:

- Reorient or relocate the receiving antenna.
- Increase the separation between the equipment and receiver.
- Connect the equipment to an outlet on a circuit different from that to which the receiver is connected.

This device complies with part 15 of the FCC rules. Operation is subject to the following two conditions: (1) This device may not cause harmful interference, and (2) this device must accept any interference received, including interference that may cause undesired operation.

Note: Modifications to this product will void the user's authority to operate this equipment.

NOTE: For your privacy security, we strongly suggest that you reset the camera to factory default settings and take out the inserted SD card before returning.